

Doc ref	HAC415-series 250KW to 600KW
Issue	3
Date	Sept 2008
Page	1 of 2

TECHNICAL SUMMARY SHEET

HAC415 series – 250KW to 600KW

3 PHASE AC LOAD BANKS

Features

- SIMPLE OPERATION
- TWIST LOCK CABLE CONNECTORS
- ISOLATION CONTACTORS
- FAN FAIL PROTECTION
- LOW COST
- HIGH POWER
- NO AUX MAINS REQUIRED
- FUSE PROTECTION
- INTELLIGENT HAND HELD CONTROLLER
- PARALLEL OPERATION
- PC DATA LOGGING



special HAC415-300 on road trailer

The Hillstone HAC series load banks offer a low cost solution to on-site AC testing of UPS and generators. Units incorporate force cooled high powered resistor elements plus safety features including twist lock safety cable connectors, HRC fuse protection, fan failure shut down and emergency stop push button. Hand held controllers, digital meter and PC interface with data logging facilities are also available as optional extras.

Performance table

LOAD BANK type ref.	Max volts	Power at 415V	Amps at 415V	Power at 400V	Amps at 400V	Power at 380V	Amps at 380V	Case size	Approx weight
HAC415-250	415V	250KW	347A	230KW	333A	210KW	318A	1	230kgs
HAC415-300	415V	300KW	417A	276KW	399A	252KW	382A	1	250kgs
HAC415-400	415V	400KW	556A	367KW	532A	336KW	509A	2	380kgs
HAC415-500	415V	500KW	694A	459KW	666A	420KW	637A	3	450kgs
HAC415-600	415V	600KW	833A	551KW	799A	504KW	764A	3	550kgs

Specification

Max voltage	415 volts, three phase, 4 wire with neutral (for delta see note 7)		
Frequency	50 hz (60 hz option see note 7)		
Rating	see above table		
Adjustment	from 1KW to max power, selected via panel mounted illuminated switches (see note 2)		
Controls	Control/fan control, emergency stop and load channel selector switches (see note 2)		
Cable termination	Panel mounted, non interchangeable, fast connection, twist lock safety connectors for external cables to L1, L2, L3, N & earth (see note 3)		
Cooling	3 phase, 50 Hz, horizontal force air cooling fan, powered from the test source		
Element type	10 mm, insulated, air cooled, finned sheathed resistor elements (see note 4)		
Environmental Protection	Designed for outdoor operation, electrical control chamber IP54, element chamber IP21 (see note 7)		
Construction	Robust Zintec steel frame and panels and drip lid		
Finish	Powered coated, textured finish RAL 7032		
Operating temperature	0-40 deg C (see note 5 and 6)		
Storage temperature	0-80 deg C		
Movement	Skid runners, lifting eyes plus folk lifting points		
Optional extras	Digital panel meter PC interface and data logging software Separate auxiliary control/fan supply 480V / 277V designs available Louvered inlet and outlets	Hand held controller Single phase testing operation Delta connection option Matching twist lock connectors Aluminised steel	Test cable sets 60 Hz operation Floor fixing kit Sun shield Road trailer

TECHNICAL SUMMARY SHEET

HAC415 series continued

Doc ref	HAC415-series 250KW to 600KW
Issue	3
Date	Sept 2008
Page	2 of 2

case size	case length	width	height
1	1720 mm	935 mm	1250 mm
2	1050 mm	1660 mm	1070 mm
3	1950 mm	1050 mm	1250 mm

Optional extras - additional information

HAND HELD CONTROLLER - *iHHC*

The iHHC (intelligent hand held controller) provides remote control and display of the load bank power level. Two modes of operation are provided :

Load adjust mode allows the operator to pre-select the required load in KW's as displayed on the iHHC. Pressing the *ACCEPT* button on the iHHC will instruct the load bank to connect the requested power level and then automatically change the iHHC to **Running Load Mode**. During **Running Load Mode** the operator can make incremental adjustments of the power level by pressing the *LOADUP* or *LOADDOWN* buttons. Any changes to the load selection will be shown on the iHHC display.

Notes : During **Running Load Mode** an operator can pre-select and *ACCEPT* an alternative load setting to simulate load profiles. A single iHHC can also control and display the total power of multiple, parallel connected load banks. When a digital panel meter and iHHC is fitted to a load bank, the iHHC will automatically display the measured KW's during **Running Load mode**. A ten metre interconnection control cable is provided with the iHHC. Longer control cables are available on request



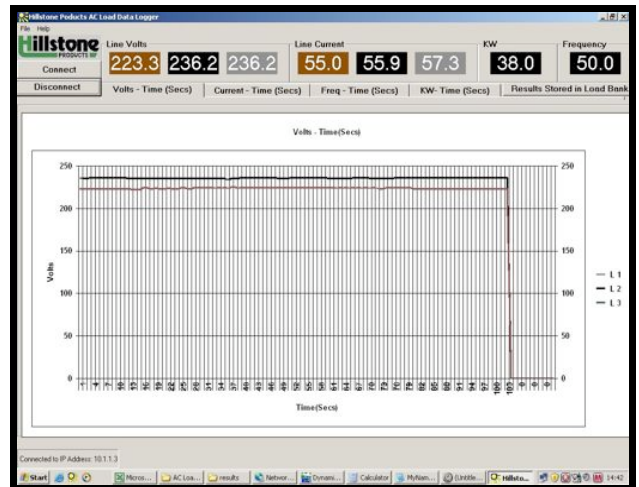
DIGITAL POWER METER

A panel mounted power meter can be provided to display, line volts, phase volts, line current, power and frequency.

PC INTERFACE & DATA LOGGING SOFTWARE

The PC interface and data logging software allows transfer and storage of test data to a laptop or PC using Hillstone/Windows XP software.

The computer display includes line volts, phase volts, line current, power and frequency plus a real time graphical display.



typical PC display

Notes :

- Units are rated for continuous operation at max volts
- Where hand held controller iHHC is supplied, the panel mounted switches are omitted
- Matching twist lock cable connectors are available as an optional extra.
- Standard resistance element tolerance +/- 5%
- For high ambient operation in direct sun light, a sun shield option is recommended.
- Contact our sales office for de-rating above 40 deg C ambient
- Where delta connection testing is required with no neutral, or for dual 50/60 hz use, a separate auxiliary supply is required.
- Changes to specification, components, dimensions or weights may vary without prior notice.
- Information in literature, quotations, manuals or datasheets are intended to be correct at the time of publication. Hillstone Products bears no responsibility for the accuracy of any information given.
- All information in this publication is the intellectual property of Hillstone Products Ltd.